



performance proven **VACUUM SOLUTIONS™**

# Vac Attack for Shipyards!

Model 616 HP: Partially Raised



Model 624: Stowed/travel Position



## VECLOADER® TRAILER MOUNTED INDUSTRIAL VACUUM LOADERS

For Abrasive Blast  
Media Recovery

Model Titan 616 Hp: Shipyard Lift Cage



Model 721: Working at shipyard



**More Power!**

**Better  
Performance!**

**Proven Solutions!**

For Shipyards, Vector Technologies offers a complete line of high CFM/high vacuum VecLoader Titan vacuums. Units are available as in trailer or skid mounting, diesel or electric. The VecLoader Titan's 28" Hg vacuum allows great job flexibility when conveying longer distances or handling dense waste streams such as steel grit. The VecLoader self-pulsing baghouse represents a thirty year legacy of proven safety and performance. The VecLoader baghouse has been "validated" by numerous safety, environmental and hygiene personnel, insuring the highest level of safety and compliance. Regardless of power and configuration, each Titan model is easily maintained and simple to use, without complicated set-up. All VecLoader vacuums are available with premium grade silencers. Electric Models can be attenuated to less than 85 dBA, where beneficial.

**Toll Free 1 (800) 832-4010**

**DELIVERING MORE EFFICIENCY, FLEXIBILITY AND POWER**

Vector Technologies Ltd./ Vacuum Engineering Division/ 6820 N. 43<sup>rd</sup> Street/ Milwaukee WI USA 53209

Toll Free: 1 800 832 4010/ Tel: 1 414 247 7100/ Fax: 1 414 247 7110  
Web Site: [www.vector-vacuums.com/](http://www.vector-vacuums.com/) E-Mail: [sales@vector-vacuums.com](mailto:sales@vector-vacuums.com)

Vacuums · Hydro Blast Systems · Dust Collectors · Vacuum Excavation Systems · Classifiers  
Blast and Recovery Systems · Spill Response Systems · Parts · Rentals · Service · Solutions



performance proven **VACUUM SOLUTIONS™**

# Vac Attack for Shipyards!



Two axle models can be towed with a "one ton". Any model can be equipped with a crane lifting cage or a gooseneck trailer.

## VECLOADER® VACUUMS

| Models                     | Mini-VecLoader 100            | Titan 616                     | Titan 616 HP                  | Titan 721                     | Titan 1021R                   |
|----------------------------|-------------------------------|-------------------------------|-------------------------------|-------------------------------|-------------------------------|
| Maximum CFM/Hg             | 1,340/28"                     | 2,367/24"                     | 2,367/28"                     | 3,660/28"                     | 6,150/28"                     |
| Horsepower                 | 100                           | 125                           | 170                           | 225                           | 350                           |
| Primary Filtration         | Coated bags pulse air cleaned | Coated bags pulse air cleaned | Coated bags pulse air cleaned | Coated bags pulse air cleaned | Coated bags pulse air cleaned |
| Secondary Filtration       | Pleated cartridge             | Pleated cartridge             | Pleated cartridge             | Pleated cartridge             | Pleated cartridge             |
| Max. Hose Diameter         | 4"                            | 5"                            | 5"                            | 6"                            | 8"                            |
| Dimensions (L, W, H)       | 16' 1", 7' 2", 10' 0"         | 17' 5", 8' .5", 11' 2.5"      | 17' 5", 8' .5", 11' 2.5"      | 21'0", 8' 2.5", 11' 4"        | 24'10", 8' 4.0", 11' 4"       |
| Number of Axles            | 2                             | 2                             | 2                             | 3                             | 3                             |
| Empty Weight               | 8,100#                        | 10,500#                       | 10,500#                       | 13,950#                       | 22,350#                       |
| Maximum Conveying          | 1,200'                        | 750'                          | 1,200'                        | 1,200'                        | 1,200'                        |
| Maximum Performance/Bulk   | 8 tons/hr.                    | 14 tons/hr.                   | 15 tons/hr.                   | 23 tons/hr.                   | 30 tons/hr.                   |
| Maximum Performance/Liquid | 100 gallons/min.              | 275 gallons/min.              | 300 gallons/min.              | 425 gallons/min.              | 600 gallons/min.              |

**\*Performance figures are based upon steel grit collection at 200 feet distances. Many factors will affect vacuum productivity.**

*Options and Alternative Designs:*

**Power:** Diesel, electric, explosion resistant. **Mounting:** Road legal trailer, all terrain, skid, truck, and crane.

**Unloader valves:** Double dump, gravity, rotary airlock, and specialty valves. **Filtration:** HEPA, nuclear, carbon, product specific.

**Accessories:** Cyclone drum fillers, intermediate hoppers and separators, bagging stations, vacuum hose, specialty nozzles, and engineered solutions.

VecLoaders are extremely powerful and compact vacuum systems, incorporating innovative technology to solve a wide range of industrial vacuuming and conveyance needs. They move coal, ash, dirt, blast media, sand, stone, water, slurry and other flowable bulk materials utilizing either four, five or six inch diameter hose or multiple smaller diameter hoses. Modular in design, VecLoaders can be easily matched to a broad assortment of customer specified cyclone separators, filter-receivers, collections systems, classifiers, self-dumping hoppers and intermediate collection devices. Specifications subject to change without notice so that improvements are made as quickly as possible.

## Toll Free 1(800) 832 4010

### DELIVERING MORE EFFICIENCY, FLEXIBILITY AND POWER

Vector Technologies Ltd./ Vacuum Engineering Division/ 6820 N. 43<sup>rd</sup> Street/ Milwaukee WI USA 53209

Toll Free: 1 800 832 4010/ Tel: 1 414 247 7100/ Fax: 1 414 247 7110

Web Site: [www.vector-vacuums.com/](http://www.vector-vacuums.com/) E-Mail: [sales@vector-vacuums.com](mailto:sales@vector-vacuums.com)

**Vacuums · Hydro Blast Systems · Dust Collectors · Vacuum Excavation Systems · Classifiers · Blast and Recovery Systems · Spill Response Systems · Parts · Rentals · Service · Solutions**



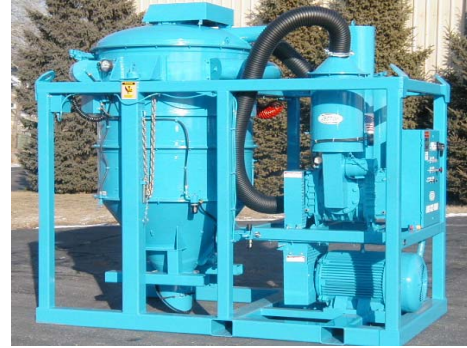
performance proven **VACUUM SOLUTIONS™**

# Vac Attack for Shipyards!

## VECLOADER® TITAN® M Series

VACUUM LOADERS

### Now Even QUIETER!



**Exceptional Vacuum Power and Performance In A Rugged, Compact and Quiet, Electric Vacuum Package. Sound Levels under 85 dBA are now available.**

## Toll Free 1 (800) 832 4010

VecLoader Titan Ms are versatile skid mounted, heavy duty, low maintenance vacuum loaders for high performance vacuuming of most flowable bulk materials and liquids. Titan Ms were specifically designed for the difficult environment encountered in marine and shipyard applications and have become the industry standards. The VecLoader Titan M's 28" Hg vacuum allows great job flexibility when conveying longer distances or handling dense waste streams such as steel grit.

Utilizing a four or five-inch diameter hose or multiple smaller diameter hoses, the Titan M can vacuum steel grit and other abrasives at distances up to 1,200 feet and with productivity of up to 14 tons per hour. The Titan M has standard fork lift pockets and lifting eyes as an integral part of the design. Units are now available with Sound Attenuation panels and premium grade silencers; providing powerful, yet quiet operation with sound levels to below 85 dBA.

**Vector Technologies Ltd./ Vacuum Engineering Division/ 6820 N. 43<sup>rd</sup> Street/ Milwaukee WI USA 53209**

**Toll Free: 1 800 832 4010/ Tel: 1 414 247 7100/ Fax: 1 414 247 7110**

**Web Site: [www.vector-vacuums.com/](http://www.vector-vacuums.com/) E-Mail: [sales@vector-vacuums.com](mailto:sales@vector-vacuums.com)**

**Industrial Vacuum Systems · Hydro Blast Recovery Systems · Dust Collectors · Classifiers · Grit Blast and Recovery Systems  
Equipment · Parts · Rentals · Service · Solutions**



performance proven **VACUUM SOLUTIONS™**

# Vac Attack for Shipyards!

## VECLOADER® TITAN® M SERIES



| Models:                     | TITAN® M412                    | TITAN® M-2                     | TITAN® M-250                   |
|-----------------------------|--------------------------------|--------------------------------|--------------------------------|
| Maximum CFM/Hg:             | 1,337 CFM /28" Hg              | 2,367 CFM /28" Hg              | 5,500 CFM /28" Hg              |
| Standard Horsepower:        | 100 Hp                         | 150 Hp                         | 200-250 Hp                     |
| Primary Filtration:         | Coated bags, pulse air cleaned | Coated bags, pulse air cleaned | Coated bags, pulse air cleaned |
| Secondary Filtration:       | Pleated cartridge              | Pleated cartridge              | Pleated cartridge              |
| Maximum Hose Diameter:      | 4"                             | 5"                             | 6"                             |
| Dimensions (L, W, H):       | 10' 4", 6' .25", 10' 0"        | 10' 4", 6' .25", 10' 0"        | 25' 0", 8' 4", 12' 1"          |
| Weight:                     | 8,260#                         | 8,460#                         | 22,950#                        |
| Maximum Conveying Distance: | 1,200'                         | 1,200'                         | 1,200'                         |
| Maximum Performance/Bulk:*  | 4- 6 tons/hr.                  | 7-11 tons/hr.                  | 18-25 tons/hr.                 |
| Maximum Performance/Liquid: | 100 gallons/min.               | 275 gallons/min.               | 400 gallons/min.               |

\*Performance figures are based upon steel grit collection at 200 feet distances. Many factors will affect vacuum productivity.

**Options and Alternative configurations** (Standard design is noted in italics)

**Power:** *Electric*, diesel, explosion resistant. **Mounting:** *Heavy-duty skid mounted*, road legal trailer, all terrain, truck, crane.

**Unloader valves;** *Gravity dump*, double dump, rotary airlock, specialty. **Filtration:** *Microfilter*, HEPA, nuclear, carbon, product specific.

**Accessories:** Cyclone drum fillers, intermediate hoppers and separators, bagging stations, specialty nozzles, early warning shut downs, sound attenuation packages and engineered solutions.

The Titan M is a high-power, low maintenance, user and environmentally friendly vacuum loader designed to cost-effectively replace liquid ring vacuums. Titan Ms can vacuum most flowable bulk materials and liquids, providing the same rugged construction and powerful performance that is standard on all VecLoader vacuums. Titan M vacuums have the power to operate at long distances utilizing 4' - 5" or multiple smaller diameter hoses. Sound levels under 85 dBA are now obtainable.

## Toll Free 1 (800) 832 4010

Vector Technologies Ltd./ Vacuum Engineering Division/ 6820 N. 43rd Street/ Milwaukee WI USA 53209

Toll Free: 1 800 832 4010/ Tel: 1 414 247 7100/ Fax: 1 414 247 7110

Web Site: [www.vector-vacuums.com/](http://www.vector-vacuums.com/) E-Mail: [sales@vector-vacuums.com](mailto:sales@vector-vacuums.com)