

T U B I N G
A N D
F I T T I N G S
C A T A L O G



performance proven VACUUM SOLUTIONS™

Toll Free 1(800) 832-4010



Vacuums · Hydro Blast Systems · Dust Collectors · Vacuum Excavation Systems · Blast and Recovery Systems · Spill Response Systems
Equipment · Parts · Rentals · Service · Solutions

ORDERING PROCEDURE

To avoid possible errors and to enable us to provide the best service, be sure your order contains the following information clearly stated:

1. *Correct Billing & Shipping Address*
2. *Freight Billing* — Indicate whether shipping charges are to be "Freight Collect" or "Prepaid" and added to invoice.
3. *Quantity*
4. *Part Number*
5. *Description* (Example: 6" — 90° Standard Elbow)
6. *Type of End* (If other than Standard, clearly specify)
7. *Tubing Length* (If other than Standard, clearly specify)
8. *Material Specification* (Carbon, Zinc/Galv., etc.)
9. *Desired Shipping Date*
10. *Confirming Orders* (If order confirms a previous telephone order, please mark order "CONFIRMING ORDER — DO NOT DUPLICATE")

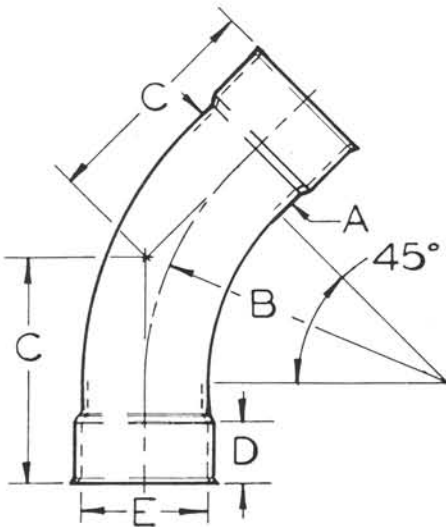
STANDARD STOCK TUBING

PART NO.	SIZE	—	GAUGE	CARBON STEEL	GALVANIZED STEEL	STAINLESS STEEL—304	ALUMINUM TYPE 6061
				STOCK LG.	STOCK LG.	STOCK LG.	STOCK LG.
RVT-200	2 1/8"	—	16	20 FT.	20 FT.	20 FT.	20 FT.
RVT-250	2 1/2"	—	16	20 FT.	20 FT.	20 FT.	20 FT.
RVT-300	3"	—	16	20 FT.	20 FT.	20 FT.	20 FT.
RVT-350	3 1/2"	—	16	20 FT.	20 FT.	20 FT.	20 FT.
RVT-400	4"	—	16	20 FT.	20 FT.	20 FT.	20 FT.
RVT-500	5"	—	14	20 FT.	20 FT.	20 FT.	20 FT.
RVT-600	6"	—	14	20 FT.	20 FT.	20 FT.	20 FT.
RVT-800	8"	—	14	20 FT.	20 FT.	20 FT.	20 FT.
RVT-1000	10"	—	11	20 FT.	20 FT.	10 FT.	10 FT.
RVT-1200	12"	—	11	20 FT.	20 FT.	10 FT.	10 FT.

WHEN ORDERING, SPECIFY TYPE OF MATERIAL:
 • AVAILABLE FROM STOCK, CARBON STEEL, ZINC/GALV. COATED STEEL, STAINLESS STEEL 304, ALUMINUM TYPE 6061.

STANDARD RADIUS 45° ELBOWS

Standard Bell Ends and Standard Clamp Ends in stock through 6";
Straight Ends on request. 8" and larger in stock — Straight Ends only.



PART NO.	SIZE	A—o.d.	GAUGE	B	C	D	E—i.d.
RV-201	2 1/8"	2 1/8"	16	5"	4 1/16"	1 1/4"	2 1/8"
RV-251	2 1/2"	2 1/2"	16	6"	4 1/2"	1 1/4"	2 1/2"
RV-301	3"	3"	16	7 1/2"	5 1/8"	1 1/4"	3"
RV-351	3 1/2"	3 1/2"	16	8 3/4"	5 5/8"	1 1/4"	3 1/2"
RV-401	4"	4"	16	10"	6 1/8"	1 1/4"	4"
RV-501	5"	5"	14	12 1/2"	7 1/16"	1 1/2"	5"
RV-601	6"	6"	14	15"	9 3/32"	1 1/2"	6"
RV-801	8"	8"	14	20"	12 1/32"	—	—
RV-1001	10"	10"	11	32"	18 1/2"	—	—
RV-1201	12"	12"	11	36" **	21 1/32"	—	—

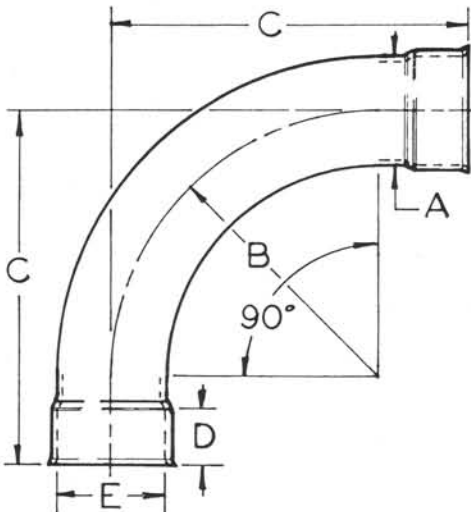
** Segmented

WHEN ORDERING, SPECIFY TYPE OF MATERIAL:

• AVAILABLE FROM STOCK. CARBON STEEL, ZINC GALV. COATED STEEL, STAINLESS STEEL 304, ALUMINUM TYPE 6061. SEE PAGE 3 FOR ORDERING PROCEDURE.

STANDARD RADIUS 90° ELBOWS

Standard Bell Ends and Standard Clamp Ends in stock through 6";
Straight Ends on request. 8" and larger in stock — Straight Ends only.



PART NO.	SIZE	A—o.d.	GAUGE	B	C	D	E—i.d.
RV-202	2 1/8"	2 1/8"	16	5"	7"	1 1/4"	2 1/8"
RV-252	2 1/2"	2 1/2"	16	6"	8"	1 1/4"	2 1/2"
RV-302	3"	3"	16	7 1/2"	9 1/2"	1 1/4"	3"
RV-352	3 1/2"	3 1/2"	16	8 3/4"	10 3/4"	1 1/4"	3 1/2"
RV-402	4"	4"	16	10"	12"	1 1/4"	4"
RV-502	5"	5"	14	12 1/2"	15 1/8"	1 1/2"	5"
RV-602	6"	6"	14	15"	18 1/4"	1 1/2"	6"
RV-802	8"	8"	14	20"	24 1/4"	—	—
RV-1002	10"	10"	11	32"	37 1/4"	—	—
RV-1202	12"	12"	11	36" **	42 1/4"	—	—

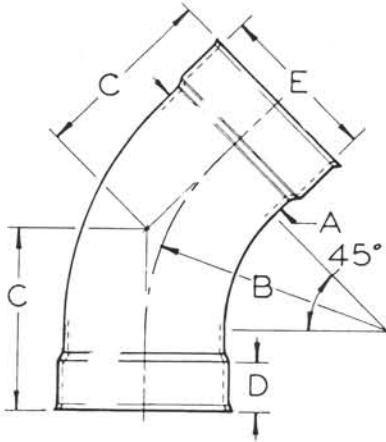
** Segmented

WHEN ORDERING, SPECIFY TYPE OF MATERIAL:

• AVAILABLE FROM STOCK. CARBON STEEL, ZINC/GALV. COATED STEEL, STAINLESS STEEL 304, ALUMINUM TYPE 6061. SEE PAGE 3 FOR ORDERING PROCEDURE.

SHORT RADIUS 45° ELBOWS

Standard Bell Ends and Standard Clamp Ends in stock through 6";
Straight Ends on request. 8" and larger in stock — Straight Ends only.



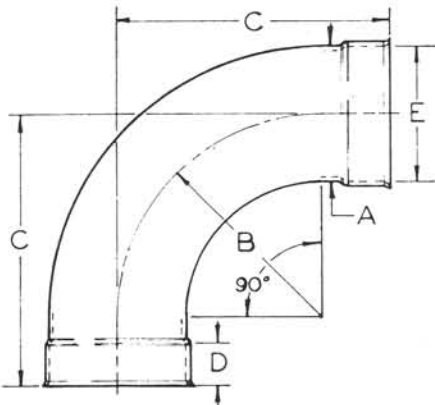
PART NO.	SIZE	A—o.d.	GAUGE	B	C	D	E—i.d.
RV-341	3"	3"	— 16	4½"	3⅞"	1¼"	3"
RV-441	4"	4"	— 16	6"	4½"	1¼"	4"
RV-541	5"	5"	— 14	7½"	5¾"	1½"	5"
RV-641	6"	6"	— 14	9"	7"	1½"	6"
RV-841	8"	8"	— 11	12"	9¼"	—	—

WHEN ORDERING, SPECIFY TYPE OF MATERIAL:

• AVAILABLE FROM STOCK. CARBON STEEL, ZINC GALV. COATED STEEL, STAINLESS STEEL 304. SEE PAGE 3 FOR ORDERING PROCEDURE.

SHORT RADIUS 90° ELBOWS

Standard Bell Ends and Standard Clamp Ends in stock through 6";
Straight Ends on request. 8" and larger in stock — Straight Ends only.



PART NO.	SIZE	A—o.d.	GAUGE	B	C	D	E—i.d.
RV-342	3"	3"	— 16	4½"	6½"	1¼"	3"
RV-442	4"	4"	— 16	6"	8"	1¼"	4"
RV-542	5"	5"	— 14	7½"	10⅞"	1½"	5"
RV-642	6"	6"	— 14	9"	12¼"	1½"	6"
RV-842	8"	8"	— 11	12"	16¼"	—	—

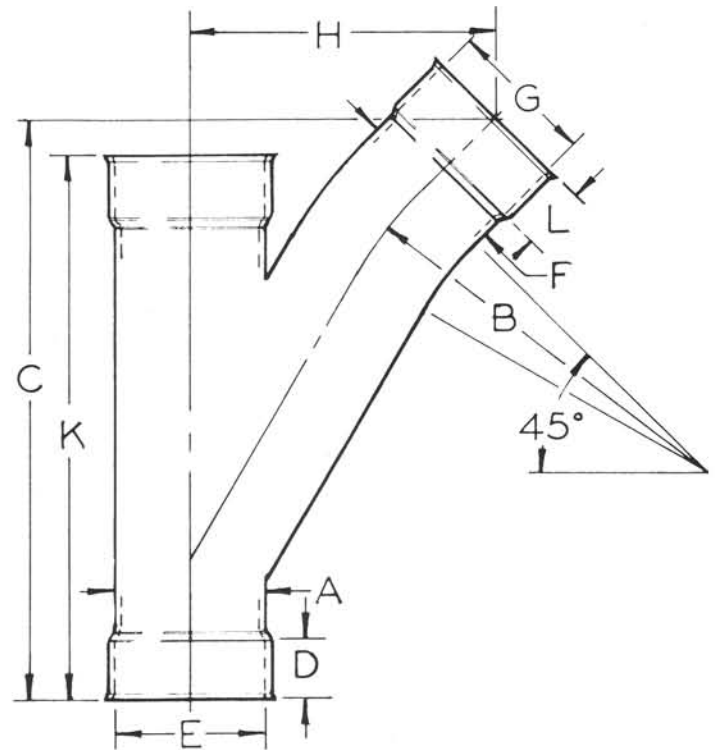
WHEN ORDERING, SPECIFY TYPE OF MATERIAL:

• AVAILABLE FROM STOCK. CARBON STEEL, ZINC/GALV. COATED STEEL, STAINLESS STEEL 304. SEE PAGE 3 FOR ORDERING PROCEDURE.

STANDARD 45° Y's Continued

AVAILABLE FROM STOCK:

Standard Bell Ends and Standard
Clamp Ends in stock through 6";
Straight Ends on request. 8" and
larger in stock—Straight Ends only.



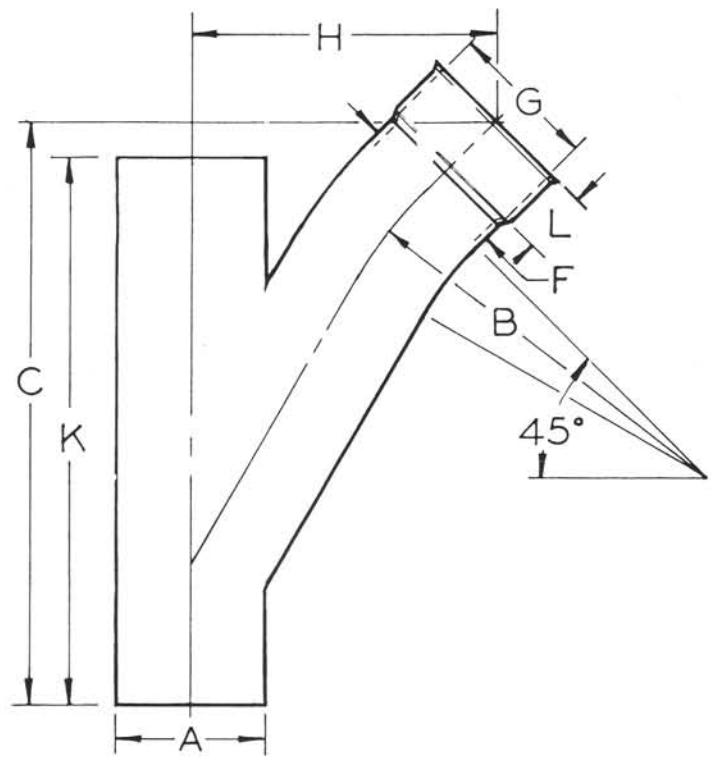
PART NO.	SIZE	A—o.d.	GAUGE	B	C	D	E—i.d.	F—o.d.	GAUGE	G—i.d.	H	K	L
RV-2051	2 1/8"	2 1/8"	16	5"	9 3/32"	1 1/4"	2 1/8"	2 1/8"	16	2 1/8"	4 11/16"	9 1/2"	1 1/4"
RV-2551	2 1/2" x 2 1/8"	2 1/2"	16	5"	9 9/32"	1 1/4"	2 1/2"	2 1/2"	16	2 1/2"	4 7/8"	10"	1 1/4"
RV-2561	2 1/2"	2 1/2"	16	6"	10 3/32"	1 1/4"	2 1/2"	2 1/2"	16	2 1/2"	5 3/16"	10"	1 1/4"
RV-3051	3" x 2 1/8"	3"	16	5"	9 17/32"	1 1/4"	3"	2 1/8"	16	2 1/8"	5 1/8"	10 1/2"	1 1/4"
RV-3061	3" x 2 1/2"	3"	16	6"	10 13/32"	1 1/4"	3"	2 1/2"	16	2 1/2"	5 7/16"	10 1/2"	1 1/4"
RV-3071	3"	3"	16	7 1/2"	11 19/32"	1 1/4"	3"	3"	16	3"	5 29/32"	11 1/2"	1 1/4"
RV-3551	3 1/2" x 2 1/8"	3 1/2"	16	5"	9 25/32"	1 1/4"	3 1/2"	2 1/8"	16	2 1/8"	5 3/8"	11"	1 1/4"
RV-3561	3 1/2" x 2 1/2"	3 1/2"	16	6"	10 21/32"	1 1/4"	3 1/2"	2 1/2"	16	2 1/2"	5 11/16"	11"	1 1/4"
RV-3571	3 1/2" x 3"	3 1/2"	16	7 1/2"	11 27/32"	1 1/4"	3 1/2"	3"	16	3"	6 3/32"	13"	1 1/4"
RV-3581	3 1/2"	3 1/2"	16	8 3/4"	12 31/32"	1 1/4"	3 1/2"	3 1/2"	16	3 1/2"	6 13/16"	13"	1 1/4"
RV-4051	4" x 2 1/8"	4"	16	5"	10 1/32"	1 1/4"	4"	2 1/8"	16	2 1/8"	5 5/8"	12"	1 1/4"
RV-4061	4" x 2 1/2"	4"	16	6"	10 29/32"	1 1/4"	4"	2 1/2"	16	2 1/2"	5 15/16"	12"	1 1/4"
RV-4071	4" x 3"	4"	16	7 1/2"	12 3/32"	1 1/4"	4"	3"	16	3"	6 13/32"	12"	1 1/4"
RV-4081	4" x 3 1/2"	4"	16	8 3/4"	13 3/32"	1 1/4"	4"	3 1/2"	16	3 1/2"	6 13/16"	14"	1 1/4"
RV-4091	4"	4"	16	10"	14 11/32"	1 1/4"	4"	4"	16	4"	7 1/4"	14"	1 1/4"
RV-5051	5" x 2 1/8"	5"	14	5"	10 17/32"	1 1/2"	5"	2 1/8"	16	2 1/8"	6 1/8"	13"	1 1/4"
RV-5061	5" x 2 1/2"	5"	14	6"	11 13/32"	1 1/2"	5"	2 1/2"	16	2 1/2"	6 7/16"	13"	1 1/4"
RV-5071	5" x 3"	5"	14	7 1/2"	12 19/32"	1 1/2"	5"	3"	16	3"	6 29/32"	15 1/2"	1 1/4"
RV-5081	5" x 3 1/2"	5"	14	8 3/4"	13 23/32"	1 1/2"	5"	3 1/2"	16	3 1/2"	7 3/16"	15 1/2"	1 1/4"
RV-5091	5" x 4"	5"	14	10"	14 27/32"	1 1/2"	5"	4"	16	4"	7 3/4"	15 1/2"	1 1/4"
RV-5151	5"	5"	14	12 1/2"	17 9/16"	1 1/2"	5"	5"	14	5"	9"	18 1/2"	1 1/2"
RV-6051	6" x 2 1/8"	6"	14	5"	11 1/32"	1 1/2"	6"	2 1/8"	16	2 1/8"	6 5/8"	15"	1 1/4"
RV-6061	6" x 2 1/2"	6"	14	6"	11 29/32"	1 1/2"	6"	2 1/2"	16	2 1/2"	6 15/16"	15"	1 1/4"
RV-6071	6" x 3"	6"	14	7 1/2"	13 3/32"	1 1/2"	6"	3"	16	3"	7 13/32"	15"	1 1/4"
RV-6081	6" x 3 1/2"	6"	14	8 3/4"	14 7/32"	1 1/2"	6"	3 1/2"	16	3 1/2"	7 13/16"	17"	1 1/4"
RV-6091	6" x 4"	6"	14	10"	15 11/32"	1 1/2"	6"	4"	16	4"	8 1/4"	17"	1 1/4"
RV-6141	6" x 5"	6"	14	12 1/2"	18 1/8"	1 1/2"	6"	5"	14	5"	9 1/2"	21"	1 1/4"
RV-6151	6"	6"	14	15"	20 25/32"	1 1/2"	6"	6"	14	6"	10 25/32"	21"	1 1/2"

WHEN ORDERING, SPECIFY TYPE OF MATERIAL:

• AVAILABLE FROM STOCK. CARBON STEEL, ZINC GALV. COATED STEEL, STAINLESS STEEL 304, ALUMINUM TYPE 6061. SEE PAGE 3 FOR ORDERING PROCEDURE.

STANDARD 45° Y's Continued

AVAILABLE FROM STOCK:
Standard Bell Ends and Standard
Clamp Ends in stock through 6";
Straight Ends on request. 8" and
larger in stock—Straight Ends only.



PART NO.	SIZE	A—o.d. — GAUGE	B	C	F—o.d. — GAUGE	G—i.d.	H	K	L
RV-8051	8" x 2 ¹ / ₈ "	8" — 14	5"	12 ¹ / ₃₂ "	2 ¹ / ₈ " — 16	2 ¹ / ₈ "	7 ⁵ / ₈ "	18"	1 ¹ / ₄ "
RV-8061	8" x 2 ¹ / ₂ "	8" — 14	6"	12 ²⁹ / ₃₂ "	2 ¹ / ₂ " — 16	2 ¹ / ₂ "	7 ¹⁵ / ₁₆ "	18"	1 ¹ / ₄ "
RV-8071	8" x 3"	8" — 14	7 ¹ / ₂ "	14 ³ / ₃₂ "	3" — 16	3"	8 ¹³ / ₃₂ "	18"	1 ¹ / ₄ "
RV-8081	8" x 3 ¹ / ₂ "	8" — 14	8 ³ / ₄ "	15 ⁷ / ₃₂ "	3 ¹ / ₂ " — 16	3 ¹ / ₂ "	8 ¹³ / ₁₆ "	21"	1 ¹ / ₄ "
RV-8091	8" x 4"	8" — 14	10"	16 ¹¹ / ₃₂ "	4" — 16	4"	9 ¹ / ₄ "	21"	1 ¹ / ₄ "
RV-8141	8" x 5"	8" — 14	12 ¹ / ₂ "	19 ¹ / ₁₆ "	5" — 14	5"	10 ¹ / ₂ "	24"	1 ¹ / ₂ "
RV-8151	8" x 6"	8" — 14	15"	21 ²⁵ / ₃₂ "	6" — 14	6"	11 ²⁵ / ₃₂ "	24"	1 ¹ / ₂ "
RV-8161	8"	8" — 14	20"	27"	8" — 14	—	14 ³ / ₃₂ "	29"	—

RV-10051	10" x 2 ¹ / ₈ "	10" — 11	5"	13 ¹ / ₃₂ "	2 ¹ / ₈ " — 16	2 ¹ / ₈ "	8 ³ / ₈ "	21"	1 ¹ / ₄ "
RV-10061	10" x 2 ¹ / ₂ "	10" — 11	6"	13 ²⁹ / ₃₂ "	2 ¹ / ₂ " — 16	2 ¹ / ₂ "	8 ¹⁵ / ₁₆ "	21"	1 ¹ / ₄ "
RV-10071	10" x 3"	10" — 11	7 ¹ / ₂ "	15 ³ / ₃₂ "	3" — 16	3"	9 ³ / ₃₂ "	21"	1 ¹ / ₄ "
RV-10081	10" x 3 ¹ / ₂ "	10" — 11	8 ³ / ₄ "	16 ⁷ / ₃₂ "	3 ¹ / ₂ " — 16	3 ¹ / ₂ "	9 ³ / ₁₆ "	24"	1 ¹ / ₄ "
RV-10091	10" x 4"	10" — 11	10"	17 ¹¹ / ₃₂ "	4" — 16	4"	10 ¹ / ₄ "	24"	1 ¹ / ₄ "
RV-10141	10" x 5"	10" — 11	12 ¹ / ₂ "	20 ¹ / ₁₆ "	5" — 14	5"	11 ¹ / ₂ "	24"	1 ¹ / ₂ "
RV-10151	10" x 6"	10" — 11	15"	22 ³ / ₄ "	6" — 14	6"	12 ²³ / ₃₂ "	28"	1 ¹ / ₂ "
RV-10161	10" x 8"	10" — 11	20"	28"	8" — 14	—	15 ³ / ₃₂ "	32"	—
RV-10171	10"	10" — 11	32"	34 ¹¹ / ₁₆ "	10" — 11	—	18 ⁵ / ₈ "	36"	—

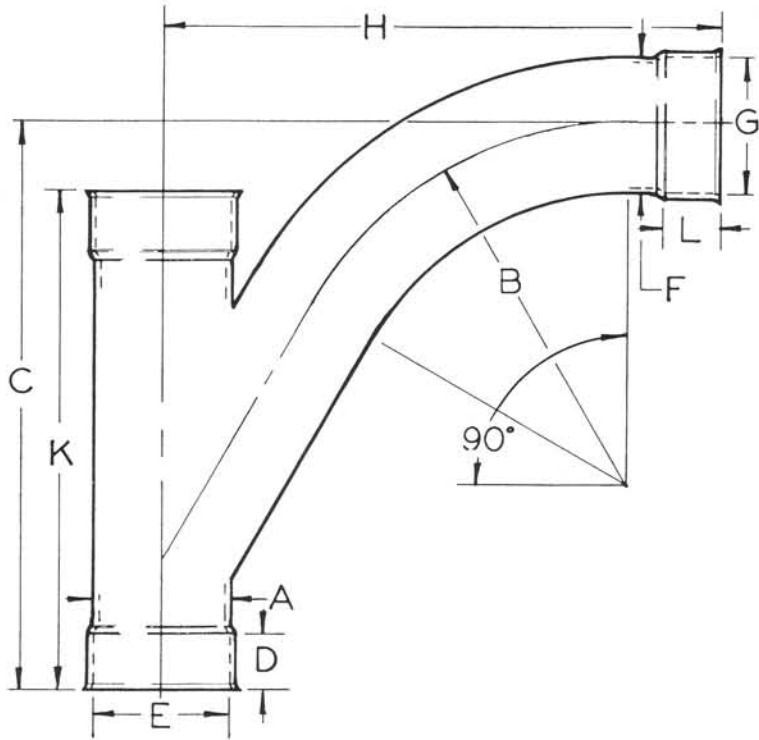
RV-12051	12" x 2 ¹ / ₈ "	12" — 11	5"	14 ¹ / ₃₂ "	2 ¹ / ₈ " — 16	2 ¹ / ₈ "	9 ⁵ / ₈ "	24"	1 ¹ / ₄ "
RV-12061	12" x 2 ¹ / ₂ "	12" — 11	6"	14 ²⁹ / ₃₂ "	2 ¹ / ₂ " — 16	2 ¹ / ₂ "	9 ¹¹ / ₃₂ "	24"	1 ¹ / ₄ "
RV-12071	12" x 3"	12" — 11	7 ¹ / ₂ "	16 ³ / ₃₂ "	3" — 16	3"	10 ¹³ / ₃₂ "	24"	1 ¹ / ₄ "
RV-12081	12" x 3 ¹ / ₂ "	12" — 11	8 ³ / ₄ "	17 ⁷ / ₃₂ "	3 ¹ / ₂ " — 16	3 ¹ / ₂ "	10 ¹³ / ₁₆ "	27"	1 ¹ / ₄ "
RV-12091	12" x 4"	12" — 11	10"	18 ¹¹ / ₃₂ "	4" — 16	4"	11 ¹ / ₄ "	27"	1 ¹ / ₄ "
RV-12141	12" x 5"	12" — 11	12 ¹ / ₂ "	21 ¹ / ₁₆ "	5" — 14	5"	12 ¹ / ₂ "	27"	1 ¹ / ₂ "
RV-12151	12" x 6"	12" — 11	15"	23 ³ / ₄ "	6" — 14	6"	13 ²⁵ / ₃₂ "	31"	1 ¹ / ₂ "
RV-12161	12" x 8"	12" — 11	20"	29"	8" — 14	—	16 ³ / ₃₂ "	35"	—
RV-12171	12" x 10"	12" — 11	32"	35 ¹¹ / ₁₆ "	10" — 11	—	19 ⁵ / ₈ "	39"	—
RV-12181	12"	12" — 11	36 ^{**}	40 ³ / ₄ "	12" — 11	—	21 ²⁷ / ₃₂ "	43"	—

** Segmented

WHEN ORDERING, SPECIFY TYPE OF MATERIAL:

• AVAILABLE FROM STOCK. CARBON STEEL, ZINC/GALV. COATED STEEL, STAINLESS STEEL 304, ALUMINUM TYPE 6061. SEE PAGE 3 FOR ORDERING PROCEDURE.

STANDARD 90° TY'S



AVAILABLE FROM STOCK:
Standard Bell Ends and Standard
Clamp Ends in stock through 6";
Straight Ends on request. 8" and
larger in stock—Straight Ends only.

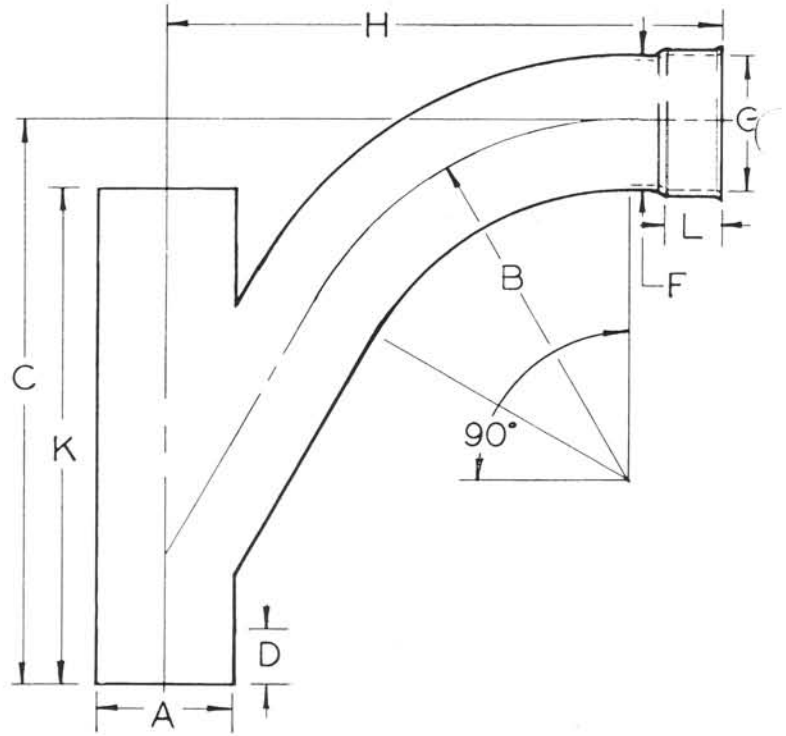
PART NO.	SIZE	A—o.d.	GAUGE	B	C	D	E—i.d.	F—o.d.	GAUGE	G—i.d.	H	K	L
RV-205	2 1/8"	2 1/8"	— 16	5"	9 3/32"	1 1/4"	2 1/8"	2 1/8"	— 16	2 1/8"	8 13/16"	9 1/2"	1 1/4"
RV-255	2 1/2" x 2 1/8"	2 1/2"	— 16	5"	9 1/32"	1 1/4"	2 1/2"	2 1/8"	— 16	2 1/8"	9"	10"	1 1/4"
RV-256	2 1/2"	2 1/2"	— 16	6"	10 1/2"	1 1/4"	2 1/2"	2 1/2"	— 16	2 1/2"	10 1/32"	10"	1 1/4"
RV-305	3" x 2 1/8"	3"	— 16	5"	9 9/32"	1 1/4"	3"	2 1/8"	— 16	2 1/8"	9 1/4"	10 1/2"	1 1/4"
RV-306	3" x 2 1/2"	3"	— 16	6"	10 3/4"	1 1/4"	3"	2 1/2"	— 16	2 1/2"	10 3/32"	10 1/2"	1 1/4"
RV-307	3"	3"	— 16	7 1/2"	12 3/8"	1 1/4"	3"	3"	— 16	3"	11 25/32"	11 1/2"	1 1/4"
RV-355	3 1/2" x 2 1/8"	3 1/2"	— 16	5"	9 27/32"	1 1/4"	3 1/2"	2 1/8"	— 16	2 1/8"	9 1/2"	11"	1 1/4"
RV-356	3 1/2" x 2 1/2"	3 1/2"	— 16	6"	11"	1 1/4"	3 1/2"	2 1/2"	— 16	2 1/2"	10 17/32"	11"	1 1/4"
RV-357	3 1/2" x 3"	3 1/2"	— 16	7 1/2"	12 5/8"	1 1/4"	3 1/2"	3"	— 16	3"	12 1/32"	13"	1 1/4"
RV-358	3 1/2"	3 1/2"	— 16	8 3/4"	14 1/8"	1 1/4"	3 1/2"	3 1/2"	— 16	3 1/2"	13 11/32"	13"	1 1/4"
RV-405	4" x 2 1/8"	4"	— 16	5"	10 3/32"	1 1/4"	4"	2 1/8"	— 16	2 1/8"	9 3/4"	12"	1 1/4"
RV-406	4" x 2 1/2"	4"	— 16	6"	11 1/4"	1 1/4"	4"	2 1/2"	— 16	2 1/2"	10 25/32"	12"	1 1/4"
RV-407	4" x 3"	4"	— 16	7 1/2"	12 7/8"	1 1/4"	4"	3"	— 16	3"	12 3/5"	12"	1 1/4"
RV-408	4" x 3 1/2"	4"	— 16	8 3/4"	14 3/8"	1 1/4"	4"	3 1/2"	— 16	3 1/2"	13 19/32"	14"	1 1/4"
RV-409	4"	4"	— 16	10"	15 5/8"	1 1/4"	4"	4"	— 16	4"	14 29/32"	14"	1 1/4"
RV-505	5" x 2 1/8"	5"	— 14	5"	10 1/32"	1 1/2"	5"	2 1/8"	— 16	2 1/8"	10 1/4"	13"	1 1/4"
RV-506	5" x 2 1/2"	5"	— 14	6"	11 1/4"	1 1/2"	5"	2 1/2"	— 16	2 1/2"	11 3/32"	13"	1 1/4"
RV-507	5" x 3"	5"	— 14	7 1/2"	13 3/8"	1 1/2"	5"	3"	— 16	3"	12 25/32"	15 1/2"	1 1/4"
RV-508	5" x 3 1/2"	5"	— 14	8 3/4"	14 7/8"	1 1/2"	5"	3 1/2"	— 16	3 1/2"	14 3/32"	15 1/2"	1 1/4"
RV-509	5" x 4"	5"	— 14	10"	16 3/8"	1 1/2"	5"	4"	— 16	4"	15 13/32"	15 1/2"	1 1/4"
RV-515	5"	5"	— 14	12 1/2"	19 3/8"	1 1/2"	5"	5"	— 14	5"	18 5/8"	18 1/2"	1 1/4"
RV-605	6" x 2 1/8"	6"	— 14	5"	11 3/32"	1 1/2"	6"	2 1/8"	— 16	2 1/8"	10 3/4"	15"	1 1/4"
RV-606	6" x 2 1/2"	6"	— 14	6"	12 1/4"	1 1/2"	6"	2 1/2"	— 16	2 1/2"	11 25/32"	15"	1 1/4"
RV-607	6" x 3"	6"	— 14	7 1/2"	13 3/8"	1 1/2"	6"	3"	— 16	3"	13 3/32"	15"	1 1/4"
RV-608	6" x 3 1/2"	6"	— 14	8 3/4"	15 3/8"	1 1/2"	6"	3 1/2"	— 16	3 1/2"	14 19/32"	17"	1 1/4"
RV-609	6" x 4"	6"	— 14	10"	16 3/8"	1 1/2"	6"	4"	— 16	4"	15 25/32"	17"	1 1/4"
RV-614	6" x 5"	6"	— 14	12 1/2"	19 3/8"	1 1/2"	6"	5"	— 14	5"	19 1/8"	21"	1 1/2"
RV-615	6"	6"	— 14	15"	22 1/8"	1 1/2"	6"	6"	— 14	6"	22 1/32"	21"	1 1/2"

WHEN ORDERING, SPECIFY TYPE OF MATERIAL:

• AVAILABLE FROM STOCK. CARBON STEEL, ZINC/GALV. COATED STEEL, STAINLESS
STEEL 304, ALUMINUM TYPE 6061. SEE PAGE 3 FOR ORDERING PROCEDURE.

STANDARD 90° TY'S Continued

AVAILABLE FROM STOCK:
 Sizes 2¹/₈" through 6" in Standard
 Bell Ends and Standard Clamp Ends.
 Straight Ends on request.
 Sizes 8", 10" and 12" in Straight
 Ends only.

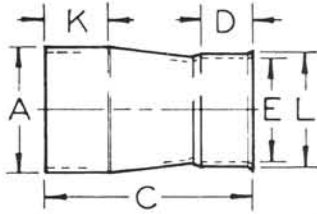


PART NO.	SIZE	A—o.d.	— GAUGE	B	C	F—o.d.	— GAUGE	G—i.d.	H	K	L
RV-805	8" x 2 ¹ / ₈ "	8"	— 14	5"	12 ³ / ₃₂ "	2 ¹ / ₈ "	— 16	2 ¹ / ₈ "	11 ³ / ₄ "	18"	1 ¹ / ₄ "
RV-806	8" x 2 ¹ / ₂ "	8"	— 14	6"	13 ¹ / ₄ "	2 ¹ / ₂ "	— 16	2 ¹ / ₂ "	12 ²⁵ / ₃₂ "	18"	1 ¹ / ₄ "
RV-807	8" x 3"	8"	— 14	7 ¹ / ₂ "	14 ⁷ / ₈ "	3"	— 16	3"	14 ⁹ / ₃₂ "	18"	1 ¹ / ₄ "
RV-808	8" x 3 ¹ / ₂ "	8"	— 14	8 ³ / ₄ "	16 ³ / ₈ "	3 ¹ / ₂ "	— 16	3 ¹ / ₂ "	15 ¹⁹ / ₃₂ "	21"	1 ¹ / ₄ "
RV-809	8" x 4"	8"	— 14	10"	17 ⁷ / ₈ "	4"	— 16	4"	16 ²⁹ / ₃₂ "	21"	1 ¹ / ₄ "
RV-814	8" x 5"	8"	— 14	12 ¹ / ₂ "	20 ⁷ / ₈ "	5"	— 14	5"	20 ¹ / ₈ "	24"	1 ¹ / ₂ "
RV-815	8" x 6"	8"	— 14	15"	23 ⁷ / ₈ "	6"	— 14	6"	23 ¹¹ / ₃₂ "	24"	1 ¹ / ₂ "
RV-816	8"	8"	— 14	20"	29 ⁷ / ₈ "	8"	— 14	—	29 ¹⁷ / ₃₂ "	29"	—
RV-1005	10" x 2 ¹ / ₈ "	10"	— 11	5"	13 ³ / ₃₂ "	2 ¹ / ₈ "	— 16	2 ¹ / ₈ "	12 ³ / ₄ "	21"	1 ¹ / ₄ "
RV-1006	10" x 2 ¹ / ₂ "	10"	— 11	6"	14 ¹ / ₄ "	2 ¹ / ₂ "	— 16	2 ¹ / ₂ "	13 ²⁵ / ₃₂ "	21"	1 ¹ / ₄ "
RV-1007	10" x 3"	10"	— 11	7 ¹ / ₂ "	15 ⁷ / ₈ "	3"	— 16	3"	15 ⁹ / ₃₂ "	21"	1 ¹ / ₄ "
RV-1008	10" x 3 ¹ / ₂ "	10"	— 11	8 ³ / ₄ "	17 ³ / ₈ "	3 ¹ / ₂ "	— 16	3 ¹ / ₂ "	16 ¹⁷ / ₃₂ "	24"	1 ¹ / ₄ "
RV-1009	10" x 4"	10"	— 11	10"	18 ⁷ / ₈ "	4"	— 16	4"	17 ²⁹ / ₃₂ "	24"	1 ¹ / ₄ "
RV-1014	10" x 5"	10"	— 11	12 ¹ / ₂ "	21 ⁷ / ₈ "	5"	— 14	5"	21 ¹ / ₈ "	24"	1 ¹ / ₂ "
RV-1015	10" x 6"	10"	— 11	15"	24 ⁷ / ₈ "	6"	— 14	6"	24 ¹¹ / ₃₂ "	28"	1 ¹ / ₂ "
RV-1016	10" x 8"	10"	— 11	20"	30 ⁷ / ₈ "	8"	— 14	—	30 ¹⁷ / ₃₂ "	32"	—
RV-1017	10"	10"	— 11	32"	40 ³ / ₈ "	10"	— 11	—	42 ²⁵ / ₃₂ "	36"	—
RV-1205	12" x 2 ¹ / ₈ "	12"	— 11	5"	14 ³ / ₃₂ "	2 ¹ / ₈ "	— 16	2 ¹ / ₈ "	13 ³ / ₄ "	24"	1 ¹ / ₄ "
RV-1206	12" x 2 ¹ / ₂ "	12"	— 11	6"	15 ¹ / ₄ "	2 ¹ / ₂ "	— 16	2 ¹ / ₂ "	14 ²⁵ / ₃₂ "	24"	1 ¹ / ₄ "
RV-1207	12" x 3"	12"	— 11	7 ¹ / ₂ "	16 ⁷ / ₈ "	3"	— 16	3"	16 ⁹ / ₃₂ "	24"	1 ¹ / ₄ "
RV-1208	12" x 3 ¹ / ₂ "	12"	— 11	8 ³ / ₄ "	18 ³ / ₈ "	3 ¹ / ₂ "	— 16	3 ¹ / ₂ "	17 ¹⁹ / ₃₂ "	27"	1 ¹ / ₄ "
RV-1209	12" x 4"	12"	— 11	10"	19 ⁷ / ₈ "	4"	— 16	4"	18 ²⁹ / ₃₂ "	27"	1 ¹ / ₄ "
RV-1214	12" x 5"	12"	— 11	12 ¹ / ₂ "	22 ⁷ / ₈ "	5"	— 14	5"	22 ¹ / ₈ "	27"	1 ¹ / ₂ "
RV-1215	12" x 6"	12"	— 11	15"	25 ⁷ / ₈ "	6"	— 14	6"	25 ¹¹ / ₃₂ "	31"	1 ¹ / ₂ "
RV-1216	12" x 8"	12"	— 11	20"	31 ⁷ / ₈ "	8"	— 14	—	31 ¹⁷ / ₃₂ "	35"	—
RV-1217	12" x 10"	12"	— 11	32"	41 ³ / ₈ "	10"	— 11	—	43 ²⁵ / ₃₂ "	39"	—
RV-1218	12"	12"	— 11	36" **	46 ⁷ / ₈ "	12"	— 11	—	49 ¹ / ₈ "	43"	—

** Segmented

WHEN ORDERING, SPECIFY TYPE OF MATERIAL:
 • AVAILABLE FROM STOCK. CARBON STEEL, ZINC GALV. COATED STEEL, STAINLESS
 STEEL 304, ALUMINUM TYPE 6061. SEE PAGE 3 FOR ORDERING PROCEDURE.

REDUCING COUPLINGS



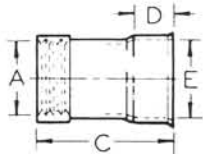
Standard Bell Ends and Standard Clamp Ends in stock through 6"; Straight Ends on request. 8" and larger in stock—Straight Ends only.

PART NO.	SIZE	A—o.d. — GAUGE	C	D	E—i.d. — GAUGE	K
RV-254	2½" x 2⅝"	2½" — 16	4½"	1¼"	2⅝" — 16	1½"
RV-3041	3" x 2⅝"	3" — 16	8¾"	1¼"	2⅝" — 16	2"
RV-304	3" x 2½"	3" — 16	5"	1¼"	2½" — 16	1½"
RV-3541	3½" x 2⅝"	3½" — 16	11"	1¼"	2⅝" — 16	2"
RV-3542	3½" x 2½"	3½" — 16	9¾"	1¼"	2½" — 16	2"
RV-354	3½" x 3"	3½" — 16	5½"	1¼"	3" — 16	1½"
RV-4041	4" x 2⅝"	4" — 16	13½"	1¼"	2⅝" — 16	2"
RV-4042	4" x 2½"	4" — 16	11¾"	1¼"	2½" — 16	2"
RV-4043	4" x 3"	4" — 16	9¾"	1¼"	3" — 16	2"
RV-404	4" x 3½"	4" — 16	6"	1¼"	3½" — 16	1½"
RV-5041	5" x 2⅝"	5" — 14	19¼"	1¼"	2⅝" — 16	2¾"
RV-5042	5" x 2½"	5" — 14	17½"	1¼"	2½" — 16	2¾"
RV-5043	5" x 3"	5" — 14	15"	1¼"	3" — 16	2¾"
RV-5044	5" x 3½"	5" — 14	12½"	1¼"	3½" — 16	2¾"
RV-504	5" x 4"	5" — 16	8"	1¼"	4" — 16	1¾"
RV-6041	6" x 2⅝"	6" — 14	24¾"	1¼"	2⅝" — 16	3¼"
RV-6042	6" x 2½"	6" — 14	23"	1¼"	2½" — 16	3¼"
RV-6043	6" x 3"	6" — 14	20½"	1¼"	3" — 16	3¼"
RV-6044	6" x 3½"	6" — 14	18"	1¼"	3½" — 16	3¼"
RV-6045	6" x 4"	6" — 14	15¾"	1¼"	4" — 16	3¼"
RV-604	6" x 5"	6" — 14	9"	1½"	5" — 14	1¾"
RV-8044	8" x 4"	8" — 14	26¼"	1¼"	4" — 16	4¼"
RV-8045	8" x 5"	8" — 14	21⅝"	1½"	5" — 14	4¼"
RV-804	8" x 6"	8" — 14	17½"	1½"	6" — 14	4¼"
RV-10045	10" x 5"	10" — 11	32⅝"	1½"	5" — 14	5¼"
RV-10046	10" x 6"	10" — 11	28½"	1½"	6" — 14	5¼"
RV-1004	10" x 8"	10" — 14	18¼"	2½"	8" — 14	5¼"
RV-12048	12" x 8"	12" — 11	29¼"	2½"	8" — 14	6¼"
RV-1204	12" x 10"	12" — 11	19¾"	3"	10" — 11	6¼"

WHEN ORDERING, SPECIFY TYPE OF MATERIAL:

• AVAILABLE FROM STOCK: CARBON STEEL, ZINC GALV. COATED STEEL, STAINLESS STEEL 304, ALUMINUM TYPE 6061. SEE PAGE 3 FOR ORDERING PROCEDURE.

FEMALE REDUCING ADAPTER EXPANDED



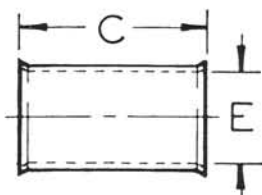
Available from stock in Standard Bell End and Standard Clamp End.

PART NO.	SIZE	A—F.I.P.S.	C	D	E—i.d.	GAUGE
RVA-206	2" to 2½"	2"	4¼"	1¼"	2½"	16

WHEN ORDERING, SPECIFY TYPE OF MATERIAL:

• AVAILABLE FROM STOCK: CARBON STEEL, ZINC GALV. COATED STEEL, STAINLESS STEEL 304, ALUMINUM TYPE 6061. SEE PAGE 3 FOR ORDERING PROCEDURE.

SLIP COUPLINGS



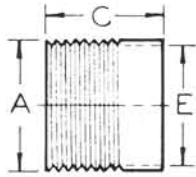
PART NO.	SIZE	C	E—i.d.	GAUGE
RV-203	2⅝"	3"	2⅝"	16
RV-253	2½"	3½"	2½"	16
RV-303	3"	4"	3"	16
RV-353	3½"	4½"	3½"	16
RV-403	4"	5"	4"	16
RV-503	5"	6"	5"	14
RV-603	6"	7"	6"	14
RV-803	8"	8"	8"	14
RV-1003	10"	10"	10"	11
RV-1203	12"	12"	12"	11

Also available from stock with Standard Clamp Ends.

WHEN ORDERING, SPECIFY TYPE OF MATERIAL:

• AVAILABLE FROM STOCK: CARBON STEEL, ZINC GALV. COATED STEEL, STAINLESS STEEL 304, ALUMINUM TYPE 6061. SEE PAGE 3 FOR ORDERING PROCEDURE.

MALE ADAPTER NIPPLE

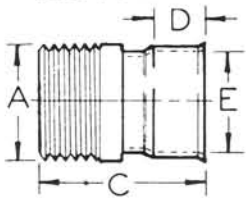


PART NO.	SIZE	A-M.I.P.S.	C	E-i.d.
RVA-20	2 1/8"	2"	2"	2 1/8"

WHEN ORDERING, SPECIFY TYPE OF MATERIAL:

• AVAILABLE FROM STOCK: CARBON STEEL, ZINC GALV. COATED STEEL, STAINLESS STEEL 304, ALUMINUM TYPE 6061. SEE PAGE 3 FOR ORDERING PROCEDURE.

MALE ADAPTER EXPANDED



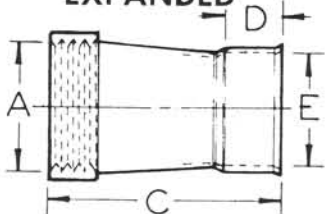
Available from Stock in Standard Bell End and Standard Clamp End.

PART NO.	SIZE	A-M.I.P.S.	C	D	E-i.d.	GAUGE
RVA-204	2" to 2 1/8"	2"	4"	1 1/4"	2 1/8"	16
RVA-254	2 1/2" to 2 1/2"	2 1/2"	4"	1 1/4"	2 1/2"	16
RVA-304	3" to 3"	3"	4 3/4"	1 1/4"	3"	16
RVA-354	3 1/2" to 3 1/2"	3 1/2"	4 3/4"	1 1/4"	3 1/2"	16
RVA-404	4" to 4"	4"	4 3/4"	1 1/4"	4"	16
RVA-504	5" to 5"	5"	5"	1 1/2"	5"	14
RVA-604	6" to 6"	6"	5 1/4"	1 1/2"	6"	14

WHEN ORDERING, SPECIFY TYPE OF MATERIAL:

• AVAILABLE FROM STOCK: CARBON STEEL, ZINC GALV. COATED STEEL, STAINLESS STEEL 304, ALUMINUM TYPE 6061. SEE PAGE 3 FOR ORDERING PROCEDURE.

FEMALE ADAPTER EXPANDED



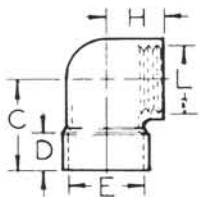
Available from Stock in Standard Bell End and Standard Clamp End.

PART NO.	SIZE	A-F.I.P.S.	C	D	E-i.d.	GAUGE
RVA-203	2" to 2 1/8"	2"	4"	1 1/4"	2 1/8"	16
RVA-253	2 1/2" to 2 1/2"	2 1/2"	5"	1 1/4"	2 1/2"	16
RVA-303	3" to 3"	3"	5 1/4"	1 1/4"	3"	16
RVA-353	3 1/2" to 3 1/2"	3 1/2"	5 1/2"	1 1/4"	3 1/2"	16
RVA-403	4" to 4"	4"	6 1/2"	1 1/4"	4"	16
RVA-503	5" to 5"	5"	6 3/4"	1 1/2"	5"	14
RVA-603	6" to 6"	6"	7"	1 1/2"	6"	14

WHEN ORDERING, SPECIFY TYPE OF MATERIAL:

• AVAILABLE FROM STOCK: CARBON STEEL, ZINC GALV. COATED STEEL, STAINLESS STEEL 304, ALUMINUM TYPE 6061. SEE PAGE 3 FOR ORDERING PROCEDURE.

90° ADAPTER ELBOWS

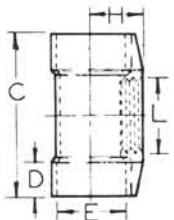


PART NO.	SIZE	C	D	E-i.d.	H	L-F.I.P.S.
RVM-201	2 1/8" to 2"	2 3/8"	1 1/8"	2 1/8"	1 3/8"	2"

WHEN ORDERING, SPECIFY TYPE OF MATERIAL:

• AVAILABLE FROM STOCK AS CAST GRAY IRON OR ZINC COATED OR NICKEL PLATED. ALSO AVAILABLE IN CAST ALUMINUM. SEE PAGE 3 FOR ORDERING PROCEDURE.

ADAPTER TEES

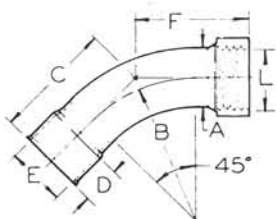


PART NO.	SIZE	C	D	E-i.d.	H	L-F.I.P.S.
RVM-202	2 1/8" to 2"	4 1/8"	1 1/8"	2 1/8"	1 1/8"	2"
RVM-250	2 1/2" to 2"	6 1/2"	1 1/4"	2 1/2"	2 1/8"	2"
RVM-302	3" to 2"	6 1/2"	1 1/4"	3"	2 3/4"	2"
RVM-352	3 1/2" to 2"	6 7/8"	1 1/4"	3 1/2"	3 1/8"	2"
RVM-402	4" to 2"	6 7/8"	1 1/4"	4"	3 1/8"	2"

WHEN ORDERING, SPECIFY TYPE OF MATERIAL:

• LM-202, MATERIAL SPECIFICATIONS SAME AS LM-201. LM-250 AND LARGER AVAILABLE FROM STOCK IN CARBON STEEL, ZINC GALV. COATED STEEL, STAINLESS STEEL 304, ALUMINUM TYPE 6061. SEE PAGE 3 FOR ORDERING PROCEDURE.

45° ELBOW FEMALE ADAPTER Available from stock in Standard Bell End and Standard Clamp End.

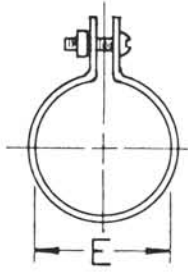


PART NO.	SIZE	A-o.d.	GAUGE	B	C	D	E-i.d.	F	L-F.I.P.S.
RVA-2011	2 1/8" to 2"	2 1/8"	16	5"	4 1/8"	1 1/4"	2 1/8"	4 1/8"	2"
RVA-2511	2 1/2" to 2"	2 1/2"	16	6"	4 1/2"	1 1/4"	2 1/2"	4 1/2"	2"
RVA-2512	2 1/2" to 2 1/2"	2 1/2"	16	6"	4 1/2"	1 1/4"	2 1/2"	4 1/2"	2 1/2"

WHEN ORDERING, SPECIFY TYPE OF MATERIAL:

• AVAILABLE FROM STOCK: CARBON STEEL, ZINC GALV. COATED STEEL, STAINLESS STEEL 304, ALUMINUM TYPE 6061. SEE PAGE 3 FOR ORDERING PROCEDURE.

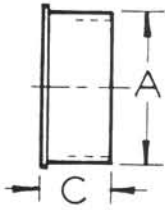
BAND HANGERS



PART NO.	SIZE	E-i.d. - GAUGE
RV-200	2½"	2½" - 16
RV-250	2½"	2½" - 16
RV-300	3"	3" - 16
RV-350	3½"	3½" - 16
RV-400	4"	4" - 16
RV-500	5"	5" - 16
RV-600	6"	6" - 16
RV-800	8"	8" - 16
RV-1000	10"	10" - 16
RV-1200	12"	12" - 16

• AVAILABLE FROM STOCK:
ZINC GALV. COATED STEEL

TUBE PLUGS

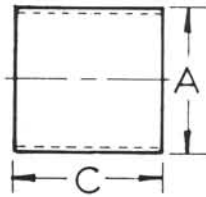


PART NO.	SIZE	A-o.d. - GAUGE	C
RV-210	2½"	2½" - 16	1⅜"
RV-260	2½"	2½" - 16	1⅜"
RV-310	3"	3" - 16	1⅜"
RV-360	3½"	3½" - 16	1⅜"
RV-410	4"	4" - 16	1⅜"
RV-510	5"	5" - 14	1⅝"
RV-610	6"	6" - 14	1⅝"
RV-810	8"	8" i.d. - 14	1¾"
RV-1010	10"	10" i.d. - 11	2"
RV-1210	12"	12" i.d. - 11	2"

WHEN ORDERING, SPECIFY TYPE OF MATERIAL:

• AVAILABLE FROM STOCK: CARBON STEEL, ZINC GALV. COATED STEEL, STAINLESS STEEL 304, ALUMINUM TYPE 6061. SEE PAGE 3 FOR ORDERING PROCEDURE.

TUBE NIPPLES



PART NO.	SIZE	A-o.d. - GAUGE	C
RV-211	2½"	2½" - 16	2½"
RV-261	2½"	2½" - 16	2½"
RV-311	3"	3" - 16	2½"
RV-361	3½"	3½" - 16	2½"
RV-411	4"	4" - 16	2½"
RV-511	5"	5" - 14	3"
RV-611	6"	6" - 14	3"
RV-811	8"	8" - 14	4"
RV-1011	10"	10" - 11	5"
RV-1211	12"	12" - 11	6"

WHEN ORDERING, SPECIFY TYPE OF MATERIAL:

• AVAILABLE FROM STOCK: CARBON STEEL, ZINC GALV. COATED STEEL, STAINLESS STEEL 304, ALUMINUM TYPE 6061. SEE PAGE 3 FOR ORDERING PROCEDURE.

SLIP WELDING RINGS

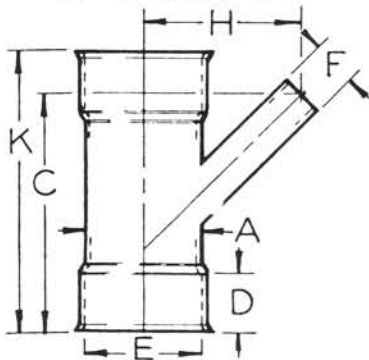


PART NO.	SIZE	C	E-i.d. - GAUGE
RV-8035	8"	3"	8" - 14
RV-10035	10"	3"	10" - 11
RV-12035	12"	3"	12" - 11

WHEN ORDERING, SPECIFY TYPE OF MATERIAL:

• AVAILABLE FROM STOCK: CARBON STEEL, ZINC GALV. COATED STEEL, STAINLESS STEEL 304, ALUMINUM TYPE 6061. SEE PAGE 3 FOR ORDERING PROCEDURE.

45° UTILITY Y's



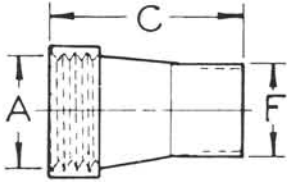
Belled Ends (see illustration) also available as Standard Clamp. "F" Dimension, Straight End only.

PART NO.	SIZE	A-o.d. GAUGE	C	D	E-i.d.	F-o.d. GAUGE	H	K
153-R	2½" x ⅞"	2½" - 16	5⅝"	1¼"	2⅝"	⅞" - 18	3⅜"	6"
154-R	2½" x ⅞"	2½" - 16	5⅝"	1¼"	2½"	⅞" - 18	3⅜"	6"
155-R	3" x ⅞"	3" - 16	5⅝"	1¼"	3"	⅞" - 18	3⅜"	6"
156-R	3½" x ⅞"	3½" - 16	5⅝"	1¼"	3½"	⅞" - 18	3⅜"	6"
157-R	4" x ⅞"	4" - 16	5⅝"	1¼"	4"	⅞" - 18	4⅜"	6"

WHEN ORDERING, SPECIFY TYPE OF MATERIAL:

• AVAILABLE FROM STOCK: CARBON STEEL, ZINC GALV. COATED STEEL, STAINLESS STEEL 304, ALUMINUM TYPE 6061. SEE PAGE 3 FOR ORDERING PROCEDURE.

FEMALE ADAPTERS

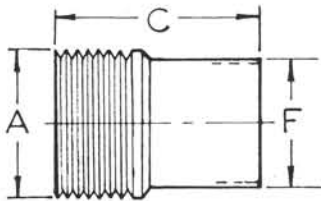


PART NO.	SIZE	A-F.I.P.S.	C	F-o.d.	GAUGE
RVA-201	2" to 2 1/8"	2"	4"	2 1/8"	16
RVA-251	2 1/2" to 2 1/2"	2 1/2"	5"	2 1/2"	16
RVA-301	3" to 3"	3"	5 1/4"	3"	16
RVA-351	3 1/2" to 3 1/2"	3 1/2"	5 1/2"	3 1/2"	16
RVA-401	4" to 4"	4"	6 1/2"	4"	16
RVA-501	5" to 5"	5"	6 3/4"	5"	14
RVA-601	6" to 6"	6"	7"	6"	14
RVA-801	8" to 8"	8"	9"	8"	14
RVA-1001	10" to 10"	10"	11"	10"	11
RVA-1201	12" to 12"	12"	13"	12"	11

WHEN ORDERING, SPECIFY TYPE OF MATERIAL:

• AVAILABLE FROM STOCK: CARBON STEEL, ZINC GALV. COATED STEEL, STAINLESS STEEL 304, ALUMINUM TYPE 6061. SEE PAGE 3 FOR ORDERING PROCEDURE.

MALE ADAPTERS

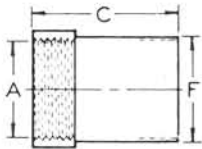


PART NO.	SIZE	A-M.I.P.S.	C	F-o.d.	GAUGE
RVA-202	2" to 2 1/8"	2"	4"	2 1/8"	16
RVA-252	2 1/2" to 2 1/2"	2 1/2"	4"	2 1/2"	16
RVA-302	3" to 3"	3"	4 3/4"	3"	16
RVA-352	3 1/2" to 3 1/2"	3 1/2"	4 3/4"	3 1/2"	16
RVA-402	4" to 4"	4"	4 3/4"	4"	16
RVA-502	5" to 5"	5"	5"	5"	14
RVA-602	6" to 6"	6"	5 1/4"	6"	14
RVA-802	8" to 8"	8"	5 3/4"	8"	14
RVA-1002	10" to 10"	10"	6 1/4"	10"	11
RVA-1202	12" to 12"	12"	6 1/2"	12"	11

WHEN ORDERING, SPECIFY TYPE OF MATERIAL:

• AVAILABLE FROM STOCK: CARBON STEEL, ZINC GALV. COATED STEEL, STAINLESS STEEL 304, ALUMINUM TYPE 6061. SEE PAGE 3 FOR ORDERING PROCEDURE.

FEMALE REDUCING ADAPTER



PART NO.	SIZE	A-F.I.P.S.	C	F-o.d.	GAUGE
RVA-205	2" to 2 1/2"	2"	4 1/4"	2 1/2"	16

WHEN ORDERING, SPECIFY TYPE OF MATERIAL:

• AVAILABLE FROM STOCK: CARBON STEEL, ZINC GALV. COATED STEEL, STAINLESS STEEL 304, ALUMINUM TYPE 6061. SEE PAGE 3 FOR ORDERING PROCEDURE.

ADHESIVE and THINNER

ADHESIVE (Pliobond)

PART NO.	AMOUNT
R-2863	PINT
R-2864	QUART
R-2865	GALLON

THINNER (M.E.K.)

PART NO.	AMOUNT
R-2868	QUART
R-2869	GALLON

INLET VALVES & ACCESSORIES

INLET VALVE
IV-180*



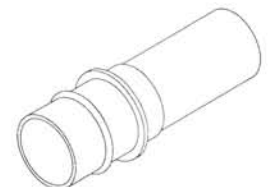
ESCUTCHEON PLATE
10253



FLOOR VALVE
FV-290*



HOSE ADAPTER
ST10*

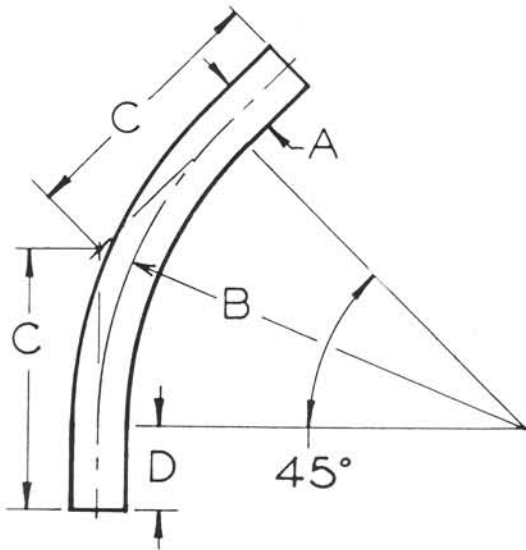


* Other sizes available

MANUFACTURING TOLERANCE $\pm 1/16"$ • SPECIFICATIONS SUBJECT TO CHANGE WITHOUT NOTICE.

LONG RADIUS BENDS 45° ON 30" CENTER LINE

Available from stock — straight ends only.



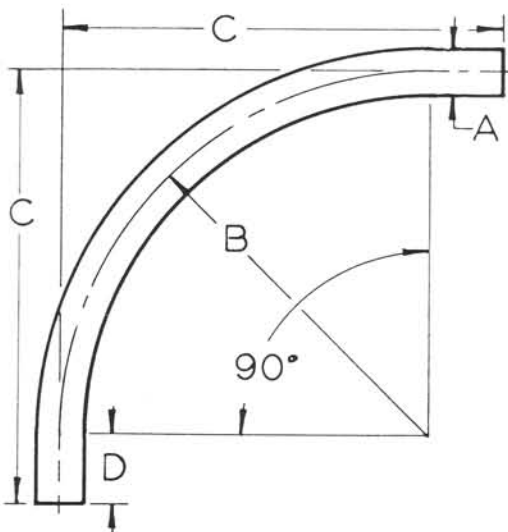
PART NO.	SIZE	A—o.d.	GAUGE	B	C	D
RV-3013	3"	3"	— 16	30"	18 $\frac{7}{16}$ "	6"
RV-3513	3 $\frac{1}{2}$ "	3 $\frac{1}{2}$ "	— 16	30"	18 $\frac{7}{16}$ "	6"
RV-4013	4"	4"	— 16	30"	18 $\frac{15}{16}$ "	6 $\frac{1}{2}$ "
RV-5013	5"	5"	— 14	30"	22 $\frac{7}{16}$ "	10"
RV-6013	6"	6"	— 14	30"	24 $\frac{7}{16}$ "	12"

WHEN ORDERING, SPECIFY TYPE OF MATERIAL:

• AVAILABLE FROM STOCK. CARBON STEEL, ZINC GALV. COATED STEEL, STAINLESS STEEL 304, ALUMINUM TYPE 6061. SEE PAGE 3 FOR ORDERING PROCEDURE.

LONG RADIUS BENDS 90° ON 30" CENTER LINE

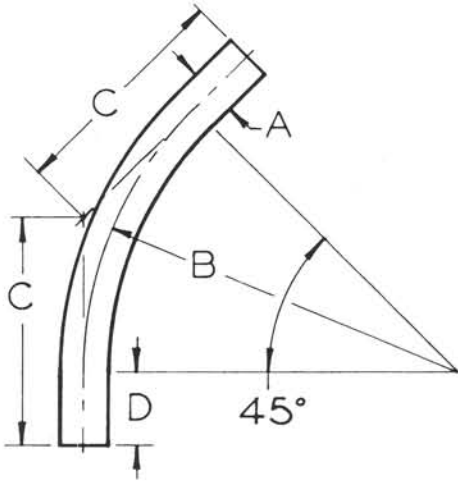
Available from stock — straight ends only.



PART NO.	SIZE	A—o.d.	GAUGE	B	C	D
RV-3023	3"	3"	— 16	30"	36"	6"
RV-3523	3 $\frac{1}{2}$ "	3 $\frac{1}{2}$ "	— 16	30"	36"	6"
RV-4023	4"	4"	— 16	30"	36 $\frac{1}{2}$ "	6 $\frac{1}{2}$ "
RV-5023	5"	5"	— 14	30"	40"	10"
RV-6023	6"	6"	— 14	30"	42"	12"

WHEN ORDERING, SPECIFY TYPE OF MATERIAL:

• AVAILABLE FROM STOCK. CARBON STEEL, ZINC/GALV. COATED STEEL, STAINLESS STEEL 304, ALUMINUM TYPE 6061. SEE PAGE 3 FOR ORDERING PROCEDURE.



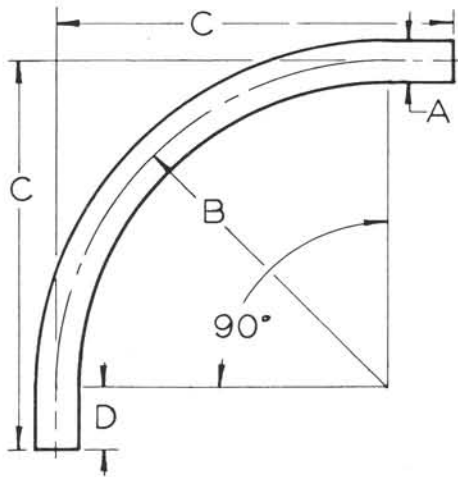
LONG RADIUS BENDS 45° ON 36" CENTER LINE

Available from stock — straight ends only.

PART NO.	SIZE	A—o.d.	GAUGE	B	C	D
RV-2016	2 1/8"	2 1/8"	— 16	36"	20 29/32"	6"
RV-2516	2 1/2"	2 1/2"	— 16	36"	20 29/32"	6"

WHEN ORDERING, SPECIFY TYPE OF MATERIAL:

• AVAILABLE FROM STOCK. CARBON STEEL, ZINC GALV. COATED STEEL, STAINLESS STEEL 304, ALUMINUM TYPE 6061. SEE PAGE 3 FOR ORDERING PROCEDURE.



LONG RADIUS BENDS 90° ON 36" CENTER LINE

Available from stock — straight ends only.

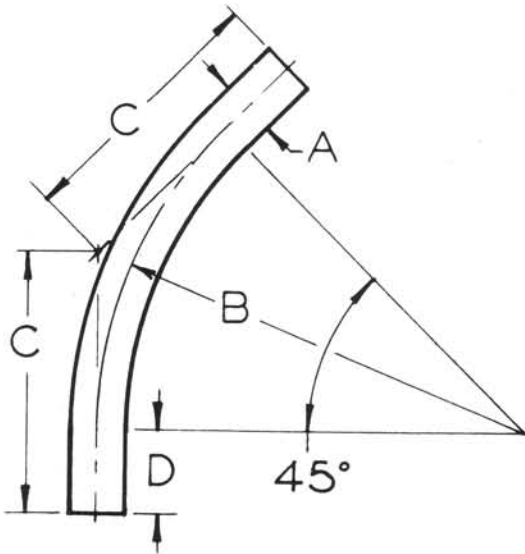
PART NO.	SIZE	A—o.d.	GAUGE	B	C	D
RV-2026	2 1/8"	2 1/8"	— 16	36"	42"	6"
RV-2526	2 1/2"	2 1/2"	— 16	36"	42"	6"

WHEN ORDERING, SPECIFY TYPE OF MATERIAL:

• AVAILABLE FROM STOCK. CARBON STEEL, ZINC/GALV. COATED STEEL, STAINLESS STEEL 304, ALUMINUM TYPE 6061. SEE PAGE 3 FOR ORDERING PROCEDURE.

LONG RADIUS BENDS 45° ON 48" CENTER LINE

Available from stock — straight ends only.



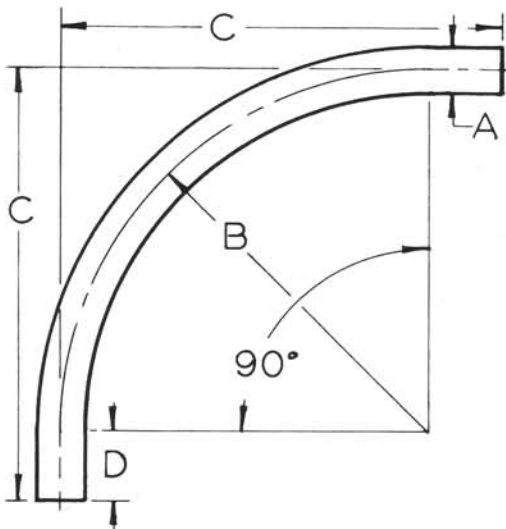
PART NO.	SIZE	A—o.d.	— GAUGE	B	C	D
RV-3018	3"	3"	— 16	48"	25 ⁷ / ₈ "	6"
RV-3518	3 ¹ / ₂ "	3 ¹ / ₂ "	— 16	48"	25 ⁷ / ₈ "	6"
RV-4018	4"	4"	— 16	48"	26 ³ / ₈ "	6 ¹ / ₂ "
RV-5018	5"	5"	— 14	48"	29 ⁷ / ₈ "	10"
RV-6018	6"	6"	— 14	48"	31 ⁷ / ₈ "	12"
RV-8018	8"	8"	— 14	48"	31 ⁷ / ₈ "	12"

WHEN ORDERING, SPECIFY TYPE OF MATERIAL:

• AVAILABLE FROM STOCK. CARBON STEEL, ZINC GALV. COATED STEEL, STAINLESS STEEL 304, ALUMINUM TYPE 6061. SEE PAGE 3 FOR ORDERING PROCEDURE.

LONG RADIUS BENDS 90° ON 48" CENTER LINE

Available from stock — straight ends only.



PART NO.	SIZE	A—o.d.	— GAUGE	B	C	D
RV-3028	3"	3"	— 16	48"	54"	6"
RV-3528	3 ¹ / ₂ "	3 ¹ / ₂ "	— 16	48"	54"	6"
RV-4028	4"	4"	— 16	48"	54 ¹ / ₂ "	6 ¹ / ₂ "
RV-5028	5"	5"	— 14	48"	58"	10"
RV-6028	6"	6"	— 14	48"	60"	12"
RV-8028	8"	8"	— 14	48"	60"	12"

WHEN ORDERING, SPECIFY TYPE OF MATERIAL:

• AVAILABLE FROM STOCK. CARBON STEEL, ZINC GALV. COATED STEEL, STAINLESS STEEL 304, ALUMINUM TYPE 6061. SEE PAGE 3 FOR ORDERING PROCEDURE.